

Gas Ranges

HOTPOINT

30" Free-Standing Standard Extra Large Oven with Porcelain Enamel Door



- ◆ Extra-Large Oven Capacity—Provides a large oven interior ideal for cooking more items at once
- ◆ All Purpose Burners—Deliver a wide range of heat output ideal for most cooking requirements
- ◆ Standard Grates—Provide a sturdy and convenient cookware surface for everyday cooking
- ◆ Porcelain Upswept Cooktop—Features raised edges to help contain spills and make clean-up easy
- ◆ Lift-Up Cooktop—Cooktop lifts up for easy access to porcelain-enameled subtop
- ◆ Easy Clean Subtop—Porcelain enameled subtop collects spills and messes for easy cleaning

Dimensions Weight:

Height: 44"
Width: 30"
Depth: 26-1/2"

Approx. 145 lbs.
Approx. Ship Wt. 165 lbs.

0143072 White

30" Free-Standing Standard Extra Large Oven with Window & Clock

HOTPOINT



- ◆ Extra-Large Oven Capacity—Provides a large oven interior ideal for cooking more items at once
- ◆ All Purpose Burners—Deliver a wide range of heat output ideal for most cooking requirements
- ◆ Electronic Clock And Timer—Features a convenient digital clock and easy-to-use timer with an audible signal to help coordinate cooking times in the kitchen
- ◆ Standard Grates—Provide a sturdy and convenient cookware surface for everyday cooking
- ◆ Porcelain Upswept Cooktop—Features raised edges to help contain spills and make clean-up easy
- ◆ Lift-Up Cooktop—Cooktop lifts up for easy access to porcelain-enameled subtop

Dimensions Weight:

Height: 46-1/2"
Width: 30"
Depth: 26-1/2"

Approx. 155 lbs.
Approx. Ship Wt. 175 lbs.

0141005 White on White

E-7

Electric Ranges

HOTPOINT

30" Electric Range Standard Super-Large Oven Capacity

- ◆ Super-Large Oven Capacity—Provides an impressively large oven interior for cooking more dishes and large meals at one time
- ◆ Coil Heating Elements—Provides consistent and even heat on the cooktop with a plug-in element that is removable for easy cleaning
- ◆ Porcelain Upswept Cooktop—Features raised edges to help contain spills and make clean-up easy
- ◆ Chrome Drip Bowls—Contain minor spills and are removable for easy cleaning
- ◆ Two Oven Racks—Feature a durable construction to help accommodate any size or type of cookware
- ◆ Removable Full Width Storage Drawer—This convenient drawer can be used for storing cookware or kitchen accessories

Dimensions

Height: 46-1/2"
Width: 29-7/8"
Depth: 26-3/8"
(including door handle)

Weight

Approx. 135 lbs.
Approx. Ship 155 lbs.



0143074 White (Shown above)
0141006 White w/Window & Clock (Shown in inset on left)

Important: No Pigtail Supplied with Electric Range



HOTPOINT

30" Electric Range, Super-Large Self-Cleaning Oven

- ◆ Self-Clean Oven—Conveniently cleans the oven cavity without the need for scrubbing
- ◆ Super-Large Oven Capacity—Provides an impressively large oven interior for cooking more dishes and large meals at one time
- ◆ Coil Heating Elements—Provides consistent and even heat on the cooktop with a plug-in element that is removable for easy cleaning
- ◆ Electronic Oven Controls—One-touch electronic pads are easy-to-use and allow for simple oven operation
- ◆ Standard Window—Provides a convenient viewing area to check the progress of food
- ◆ Frameless Glass Oven Door—Offers an easy-to-clean and stylish design that blends seamlessly into existing cabinetry

Dimensions

Height: 46-1/2"
Width: 29-7/8"
Depth: 26-3/8"
(including door handle)

Weight

Approx. 150 lbs.
Approx. Ship 170 lbs.

0143063 White

Outdoor Improvements
 Anchors & Set-Up Material
 Doors & Windows
 Coatings & Cleaners
Appliances
 Tools & Hardware
 Carpet & Flooring
 Electrical
 Plumbing
 Towing & Safety
 Heating & Cooling



GE Electric Range Standard w/ Super-Large Oven



- ◆ Standard Clean Oven—Offers a traditional oven design that requires hand cleaning
- ◆ Super-Large Oven Capacity—Provides an impressively large oven interior for cooking more dishes and large meals at one time
- ◆ Coil Heating Elements—Provides consistent and even heat on the cooktop with a plug-in element that is removable for easy cleaning
- ◆ ClearView™ Window—Features a convenient viewing area to check the progress of food
- ◆ Dual Element Bake—Alternates the upper broiling element and the lower baking element for even heating and optimal baking results
- ◆ Electronic Clock And Timer—Features a convenient digital clock and easy-to-use timer with an audible signal to help coordinate cooking times in the kitchen

Dimensions

Height: 46-7/8"
 Width: 29-7/8"
 Depth: 26-1/4"
 (including door handle)

Weight

Approx. 138 lbs.
 Approx. Ship 158 lbs.

0141010 White on White



30" Electric Range w/ Self-Cleaning Smooth Top



- ◆ Self-Clean Oven—Conveniently cleans the oven cavity without the need for scrubbing
- ◆ Super-Large Oven Capacity—Provides an impressively large oven interior for cooking more dishes and large meals at one time
- ◆ QuickSet III Oven Controls—Feature an easy to use design that lets you set precise cooking temperatures
- ◆ Ribbon Heating Elements—Provide powerful heat beneath a smooth glass surface to ensure even heat and fast warm-up times
- ◆ Ceramic Glass Cooktop—A smooth cooktop surface makes cleaning quick and easy
- ◆ ClearView™ Window—Features a convenient viewing area to check the progress of food
- ◆ Dual Element Bake—Alternates the upper broiling element and the lower baking element for even heating and optimal baking results

Dimensions

Height: 46-7/8"
 Width: 29-7/8"
 Depth: 27-3/8"

Weight:

Approx. 146 lbs.
 Approx. Ship 166 lbs.

0143049 White

E-9

Specifications Subject to Change without Notice

Both Hoods Below Feature:

- ◆ Powerful UL listed 115V motor, single speed
- ◆ 100 CFM
- ◆ Durable powder coat paint resists chipping, scratching
- ◆ Convenient front mounted fan and light controls (rocker switches)
- ◆ 8" x 8" grease filter of washable aluminum mesh
- ◆ Enclosed light illuminates cooking surface

Range Hood w/Vertical Exhaust

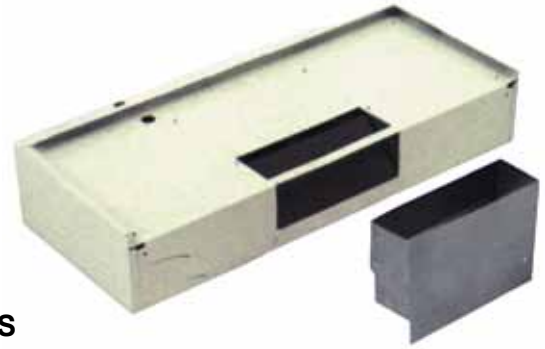


PR SERIES

Vertical 5" round outlet.

- 0422604** 30" White
- 0422605** 42" White
- 0422606** 30" Almond
- 0422607** 42" Almond

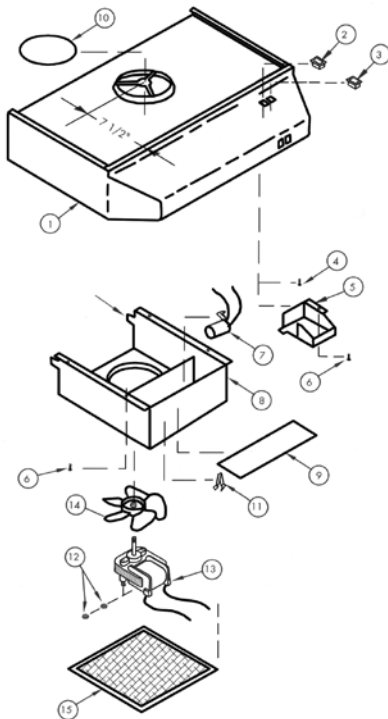
Combo Lighted Range Hoods Side or Roof Exhaust



PC SERIES

Combination air exhaust through sidewall or roof—outlet measures 3" x 8"

- 0422611** 30" Almond
- 0422612** 30" White
- 0422615** 42" Almond
- 0422616** 42" White
- 0422620** Transition Piece—Converts Rectangular Outlet for Round Duct C0579-00



REPLACEMENT PARTS

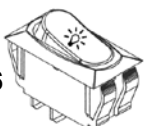
Part Key	Part Number	Description
2	0420525	New Lamp Switch, Rocker-type, Black BL1196-00
2	0420526	New Lamp Switch, Rocker-type, White BL1197-00
3	0420527	New 1-Sp. Fan Switch, Rocker-type, White BL1195
3	0420528	New 1-Sp. Fan Switch, Rocker-type, Black BL1194
9	0422630	Light Lens, 3-1/16" x 9-1/2" Flat BCC0179-00
13	0420103	Replacement Motor BCD0275-00
14	0421399	Fan Blade BCD0409-00 for PC Series
14	0421400	Fan Blade BCD0311-10 for PR Series
15	0422623	Grease Filter, 8" x 8" - Aluminum BCC0246-00

NEW STYLE

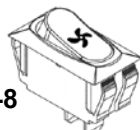
- 0420517** 2-Wire Rotary Switch - BCB0164-00
- 0420520** Switch, Rocker-type, Black BLO108-00*
- 0420522** Switch, Rocker-type, White BLO816-00*

*Without light or fan symbol on switch

0420525-6



0420527-8



Island Range Hood



115V, single speed motor fan and light with 5" dia. vertical exhaust. 12" depth x 30" width. Rocker switches. 100 CFM

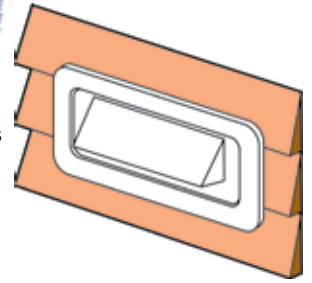


0422635 White

Hood Exhaust Vent for Lap Siding



Professionally finished look with lap siding. Simple to install, saves time and lowers cost. Reduces leaks. White.



0420500 V2213-00

Louvered Range Hood Vent



Louvered design, 1-3/4" inlet, white color. 3-1/3" x 10-1/2" RO.

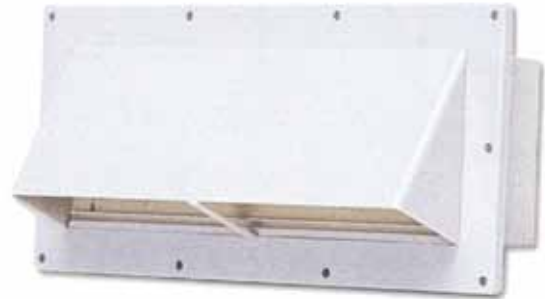


0420510 V2018-01

Louvered Range Hood Vent



Weatherproof w/ lockable damper. Heavy plastic construction. 1-3/4" inlet.



Colonial White. 3-1/3" x 10-1/2" RO. 12/Ctn.

0420509 V2111-11

Sidewall Exhaust Fans



0420710 115V Sidewall Fan, Mill Finish Exterior, White Interior, Fits 2-3/4"-4" wall thickness. V2215-11

Replacement Parts

- 0420711** Sterling Grille - V0564-37
- 0420709** White Grille - V0564-46
- 0420703** Screws for Grille (3.5" Model) - V0148-02
- 0421401** Fan Blade - BVA0312-00
- 0221802** Pressure Switch - BV0140-03
- 0262000** Sidewall Chain - BV0144-00
- 0420103** Motor, 120V, No Plug - BVD0275-00

Range Burners and Knobs

Pans and Rings for G.E. & Hotpoint Ranges



A: Burner Elements

- 0143037 6" High-Rise
- 0143038 8" High-Rise

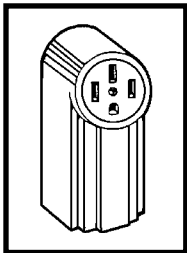
B: Burner Pans

- 0143030 6" Pan
- 0143031 8" Pan

C: Burner Rings

- 0143032 6" Ring
- 0143033 8" Ring

Range Receptacle



Surface mount power receptacle 3 pole, 4-wire, 50-amp, 125/250-volt range receptacle with "Quick-Lok" terminals. 50/Ctn.

- 0224201 Hubbell Range



Burner Elements



Authentic replacements for over 30 million supplied as OEM equipment since 1962. 3-turn coil, coil support & medallion. 250V, 1250-W. 250/Ctn.

- 0143040 6" Burner Element
- 0143042 8" Burner Element

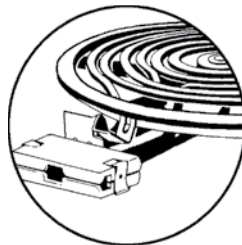
Combo Pan & Ring



This one-piece combination pan and ring is used with single coil plug-in electric range surface elements.

- 0143044 Small; 250/Ctn.
- 0143046 Large; 250/Ctn.
- 0143043 8" for Hotpoint

G.E. & Hotpoint Surface Elements



Chromolox double coil hard wire 5-turn and 6-turn elements. Fits Hotpoint and GE models. Comes without ring.

Surface Elements

- 0143037 6" High-Rise
- 0143038 8" High-Rise

Range Cord

Replacement cord for all ranges having a 1-1/8" power supply entrance.

Two #8 and two #6 conductors with molded cap and terminal plugs. 50 amp, 4' long. 12/Ctn.



- 0220306

Oven Dial for Gas T-Stat



BJWA, BJ, U Series. Dials for "D" stem application. Mounts four ways. Low 250° to 550°F plus broil. Clockwise to off.

- 0141508 Black